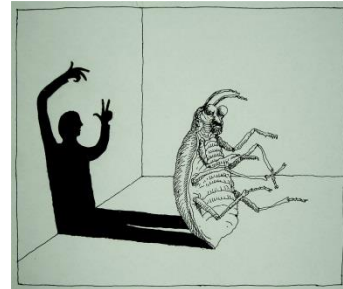


# A-Level Drama and Theatre Studies

## Component 1 – Drama and Theatre - (40%)

### What's assessed?

- Knowledge and understanding of drama and theatre
- Study of two set plays (50 marks)
- Analysis and evaluation of the work of live theatre makers



(30 marks)

### How it's assessed?

- Written exam: 3 hours

In Year 12 we currently study *Hedda Gabler* by Henrik Ibsen and *Metamorphosis* by Stephen Berkoff

**Sample questions:** *As a performer, discuss how you would want your audience to respond to the role of Judge Brack in the course of the play. How would you perform the role in at least two sections of the play in order to achieve your aims?*

*As a performer, explain and justify how you would perform the role of Gregor in the extract in order to demonstrate your understanding of Berkoff's intended style of acting.*

In the exam, you will also be expected to write a response to a live theatre production.

**Sample question:** *Explain how the performers used their movement and physical skills in order to engage the audience at particular moments in one live production that you have seen and assess their success.*

For this, it is vital we see as much live theatre as possible. To give you an idea of the theatre trips on offer, these are some of the theatre trips we ran last year:

- *The Little Matchgirl (and other happier tales)* performed by Kneehigh Theatre Company
- *Coriolanus* at the RSC
- *Dido: Queen of Cathage* at the RSC
- *DNA* by Dennis Kelly
- *The Flying Lovers of Vitebsk* performed by Kneehigh Theatre Company
- *Matilda* by Dennis Kelly and Tim Minchin

## Component 2 – Creating original Drama - (30%)

### What's assessed?

- Process of creating devised drama (influenced by the work of a prescribed practitioner)
- Performance of devised drama (as performer, designer or director)

### How it's assessed?

- Working notebook (40 marks)
- Devised performance (20 marks)

This is the practical module which requires students to devise an original piece of Drama, inspired by a theatre practitioner.

## Component 3 – Making Theatre - (30%)

### What's assessed?

- Practical exploration and interpretation of three extracts from different plays, one of which is performed as a final assessed piece (students may contribute as performer, designer or director)
- Reflective report evaluating theatrical interpretation of all three extracts

Last year, we performed:

- 'Us/Them' by Carly Wijs
- 'Adult Child/Dead Child' by Clare Dowie



### Extras:

In the Sixth Form, you will also have the opportunity to:

- Take part in workshops run by professional Actors and Practitioners
- Take part in workshops in the style of your practical module
- Direct extracts of the annual school production
- Run Drama Groups in school

Please feel free to contact either Sara Barrett ([barrett.s@sggs.org.uk](mailto:barrett.s@sggs.org.uk)) or Susan Frater ([frater.s@sggs.org.uk](mailto:frater.s@sggs.org.uk)) with any further questions