



STRATFORD GIRLS'
GRAMMAR SCHOOL

STRATFORD-UPON-AVON

Shaping Futures

CAREERS FAIR

THURSDAY 7TH MARCH





Welcome to Stratford Girls' Grammar School Careers Fair 2024

Careers Education, Information and Guidance (CEIAG) is about a joint partnership between school, students, parents, alumnae, employers, education institutions and advisory services. As you can see from this booklet, we have representatives from all of these groups attending our Fair.

We want you to know what employers are looking for - not just in terms of qualifications, but also employability skills. Most importantly we want you to understand that a company's core business is often not all that they do.

Many large organisations will have lots of different pathways within them alongside their core purpose, i.e. most companies need human resources managers, marketing, ICT support, web development, purchasing, accounts, logistics etc. Having the opportunity to talk face to face with local and national employers will help you to practise your networking skills, find out more about how businesses work and the opportunities that lie ahead for you.

We also want you to have a knowledge and understanding of how to seek out employment and other opportunities that will develop your career paths. With talks from experts in their fields you will have the chance to find out more about how people have landed their dream jobs and how to plan your next steps.

Remember that those who you talk to could be the people who can help you with work experience. Think about what you ask, how you come across and what first impressions you want them to take away.

We hope that you enjoy the evening – don't forget to take notes so you can follow up on leads and check out recommended websites.

TABLE OF CONTENTS

[Career Talks](#)

[Making the most of our Career Fair](#)

[Full list of our Exhibitors](#)

[University pages and Higher Education Providers](#)

[Employers](#)

[Apprenticeships](#)

[Gap Year information](#)

[Army Careers](#)



CAREER TALKS



TIME	SESSION	ROOM
5:40pm	Parents' Guide to UCAS Applications University of Exeter	Shakespeare Room
6:00pm	Creative Careers Talk SAE Creative Media Institute	H4 Hargreaves
6:20pm	ASK Apprenticeships	H5 Hargreaves
6:40pm	Oxbridge Talk University of Cambridge	Library, Garrett
7:00pm	Parents' Guide to UCAS Applications University of Exeter	Shakespeare, Manor
7:20pm	STEM University Courses University of Warwick	Library, Garrett
7:40pm	ASK Apprenticeships	H5, Hargreaves

MAKING THE MOST OF THE SGGS CAREERS FAIR

I AM INTERESTED IN...	EXHIBITS TO VISIT
Further Education courses	<ul style="list-style-type: none"> • SAE Creative Media Institute • Stratford College • Warwickshire College Group
Higher Education Degrees	<p>Universities of:</p> <ul style="list-style-type: none"> • Aberystwyth • Aston • Bath • Buckingham • Coventry • Keele • Lancaster • Reading • Worcester
Russel Group Universities	<p>Universities of:</p> <ul style="list-style-type: none"> • Cambridge • Cardiff • Exeter • Liverpool • Newcastle • Nottingham • Sheffield • Warwick
Apprenticeships	<p>ASK Apprenticeships, Aston Martin, Civil Service, Crowne Plaza, Deloitte, Jaguar Land Rover, National Grid, NFU Mutual, NHS, Warwickshire County Council</p> <p>Universities may also be able to advise on employers they link with to offer apprenticeship degrees.</p>

I AM INTERESTED IN...	EXHIBITS TO VISIT
Engineering	<ul style="list-style-type: none"> • Aston Martin • Jaguar Land Rover • National Grid
Business, Marketing, Sales, Commercial etc	<p>Civil Service, Deloitte, Feldon Dunsmore Solicitors, NFU Mutual, Taylor Wimpey, Warwickshire County Council</p> <p>Many other companies will also have career pathways in these areas so don't miss out an exhibitor just because you are not interested in their particular field – ask about opportunities in other areas of their business.</p>
The Arts and Creative Careers	SAE Creative Media Institute
Armed Forces	<ul style="list-style-type: none"> • Army • Royal Air Force • Royal Navy
Gap Year	GVI Gap Year
Medecine, Dentistry, Veterinary	<p>Avonvale Veterinary, Langmans Dental, NHS.</p> <p>Some of the Universities will also be able to provide information about these courses if they offer them.</p>

Making the most of the SGGGS Careers Fair

Question Prompts

What courses can I study?

What are your entry requirements?

What does your company do?

When is your next open day?

What is your favourite thing about working here?

Why did you choose to work here?

What do you do to keep green/sustainable/protect the environment?

Do you offer any apprenticeships?

What opportunities are there for work experience?

What is the hiring process?

What characteristics and educational background do you look for in applicants?

What skills are you looking for?

What career progression paths are available in your company?

Do you have any vacancies?

Exhibitors

Further and Higher Education

Aberystwyth University
Aston University
University of Bath
University of Buckingham
University of Cambridge
Cardiff University
Coventry University
University of Exeter
University of Keele
Lancaster University
University of Liverpool
University of Newcastle
University of Nottingham
University of Reading
SAE Creative Media Institute
University of Sheffield
Stratford College
SGGS Sixth Form
University of Warwick
Warwickshire College Group
University of Worcester

Employers

Aston Martin
Avonvale Veterinary Centres
Civil Service
Crowne Plaza Stratford-upon-Avon
Deloitte
Feldon Dunsmore Solicitors
Jaguar Land Rover
Langmans Dental
National Grid
NFU Mutual
NHS
Rolls Royce
Taylor Wimpey
Warwickshire County Council
Warwickshire Police

Apprenticeships & Gap Year

ASK Apprenticeships
GVI Gap Year

Armed Forces

Army
Royal Air Force
Royal Navy





Aberystwyth University

www.aber.ac.uk and www.aber.ac.uk/aberflix

Where are you located?

Established in 1872, Aberystwyth University has over 150 years of academic excellence. Situated on the west coast of Wales, Aberystwyth is home to over 6,000 students and is the ideal place in which to live, study and explore.

What do you do?

We offer a broad range of undergraduate and postgraduate degrees in subjects across the Arts, Humanities and Sciences, and our students are taught by experts in their fields.

The University recently opened Wales' first Veterinary Education Centre, offering BVSc Veterinary Science and FDS Sc Veterinary Nursing, and a new Healthcare Education Centre offering BSc Adult and Mental Health Nursing.

Aberystwyth is ranked amongst the Top 3 UK Universities for Teaching Quality and Student Experience (The Times and Sunday Times Good University Guide 2023), our students voted us Top in the UK for Lecturers and Teaching Quality, and Student Life (WhatUni? Student Choice Awards 2023), and we are ranked Top in England and Wales for Student Satisfaction (NSS 2022).

Aberystwyth is an excellent choice for students looking for a welcoming and inclusive environment, and an institution that has a global reputation for teaching excellence and ground-breaking research.



Aston University

<https://www.aston.ac.uk/>

Founded in 1895 and a university since 1966, Aston University is a research-led university known for its world-class teaching quality and strong links to industry. With 18,000 students from over 120 countries our safe and friendly campus sits in the heart of Birmingham.

We have been ranked in the Top 25 in the Guardian University Guide (2024) and have been awarded the highest rating of Triple Gold in the Teaching Excellence Framework (TEF) 2023. Our teaching is hands-on, specialist, relevant and practical, with access to professional and technical equipment. Our students work with real life projects, create start-up businesses and undertake placements and internships in industry.

One of the great things about Aston is our focus on employability. Our award-winning Careers and Placements team was voted 'best university placement team' in the National University Employability (NUE) Awards 2022. This award celebrates the contributions made by a university placement service in the UK which has gone above and beyond to support their students to apply and maximise, their work experience opportunities.

We have three academic colleges and offer courses in:

- Business, Law and Social Sciences
- Engineering and Physical Sciences
- Health and Life Sciences

We pride ourselves on our strong links with business, industry, and professions, and we firmly believe that knowledge is nothing without real-world experience.

To find out what Aston can offer you, visit us on an [Open day](#)



University of Bath

<https://www.bath.ac.uk>

The University of Bath is firmly established as a top 10 UK university (5th in The Guardian 2024, 6th in The Complete University Guide 2024 and 8th in The Times & The Sunday Times Good University Guide 2024). Located in the UNESCO World Heritage City of Bath, in South West England, Bath is 80 minutes by train to central London and 12 minutes from Bristol. Our students continue to give us top marks for the quality of our degree programmes and their student experience.

There are three faculties: Science, Engineering and Humanities & Social Sciences, plus a School of Management. There is plenty to get involved with outside of your studies, with over 200 clubs and societies and our world-renowned Sports Training Village.

We are the only UK research-intensive university offering **all** our students valuable study abroad or work experience. An undergraduate placement means you gain valuable work experience and make contacts for the future, making you extremely employable upon graduation.



THE UNIVERSITY OF BUCKINGHAM

University of Buckingham

<https://www.buckingham.ac.uk/>

Where are you located?

Buckingham is surrounded by green spaces, and our riverside campus is the ideal backdrop for your studies. You can get the best of both worlds; you are never far from a city. Milton Keynes is a 20-minute drive away and offers plenty to do. You could even jump on a fast train to explore many big cities.

What do you do?

Here at The University of Buckingham, we believe in a high-quality education delivered with passion and focus on imparting useful and relevant knowledge. We also offer students the opportunity to study a degree their way, giving a range of options on how to study, and September and January start dates for almost all of our courses.

We are ranked 2nd for Graduate Prospects (On Track) in the UK. At Buckingham, you'll be taught by experts who are internationally recognised as pioneers in their field – so you'll graduate with the latest industry knowledge.

The Good University Guide 2022 ranked us in the top 10 in the UK for Teaching Quality. We keep class sizes small, so you won't get lost in the crowd. You will be assigned a personal tutor to support you every step of the way, and our academic and student support teams will ensure you have the tools to succeed in your studies.

We also offer the option of two-year degrees, a condensed version of the traditional three-year degree, meaning you can gain a full honours degree, but graduate a whole year earlier. Alternatively, you can complete both your undergraduate and master's degree with us in just three years: saving you time and money.

Our dedication to teaching quality and student life has resulted in us being rated highly by our students and in national surveys. We are proud that the Good University Guide 2023 ranked us top 10 in the UK for Student Satisfaction. Nothing is more important to us than happy students.

University of Cambridge

<https://www.cam.ac.uk/>



Who are we?

- One of the world's oldest universities
- Home to more than 23,000 students from more than 140 countries
- Excellent academic reputation

Where are we? →



WHAT COURSES DO WE OFFER?

Anglo-Saxon, Norse and Celtic	Archaeology	Architecture	Asian and Middle Eastern Studies
Chemical Engineering and Biotechnology	Classics	Computer Science	Design
Economics	Education	Engineering	English
Foundation Year in Arts, Humanities and Social Sciences (pre-degree course)	Geography	History	History and Modern Languages
History and Politics	History of Art	Human, Social, and Political Sciences	Land Economy
Law	Linguistics	Mathematics	Medicine
Modern and Medieval Languages	Music	Natural Sciences	Philosophy
Psychological and Behavioural Sciences	Theology, Religion, and Philosophy of Religion	Veterinary Medicine	

SOME QUESTIONS YOU MIGHT LIKE TO ASK US.....

- What A-Level subjects do I need to study so that I can take _____ at Cambridge?
- What does a strong application look like?
- What should I be focusing on now, at this point in my education?
- What is student life like at the University of Cambridge?
- What financial support does the University of Cambridge offer?



**ON THE STALL:
LIBBY AND EMMA**

**SCHOOLSLIAISON@CLARE.CA
M.AC.UK**



Cardiff University

<https://www.cardiff.ac.uk/>

We are an ambitious and innovative university with a bold and strategic vision located in a beautiful and thriving capital city.

We have a diverse student population with students coming from more than 100 countries and with a range of backgrounds.

Our academic staff are driven by creativity and curiosity and many are leaders in their fields, creating a stimulating environment for learning.



Coventry University

<https://www.coventry.ac.uk/>

Where are you located?

We have over 30,000 students studying with us across 8 different campuses/ sites located in Coventry, London, Scarborough and Poland!

What do you do?

Coventry University works in partnership with schools and colleges across the Coventry and Warwickshire region to offer information/ advice and guidance about routes to university, the courses we have available, the application process, finance/ budgeting information, organising University taster days and so much more!

What can I do and where can I go within the organisation

You can choose to study from nearly 200 different courses. You can also choose to have a year of work experience (placement year) either in the UK or overseas (or a mix of the two) to ensure that you gain the skills relevant to your degree and chosen career path.

Which academic subjects would be useful to work for this organisation?

Not all job roles require specific subjects or degrees so it is best to research your chosen career first. A minimum of 5 GCSE passes (including English and Maths) is important for any job role or course (some may ask for the Sciences too).

What advice would you give to someone interested in working in this area?

Work really hard to get the grades you need for your chosen course(s)/ career goals. Get as much experience as you can – it does not have to be a part-time job, it can be volunteering for roles at schools or attending after-school clubs. This will help you later on when you are applying to colleges and university when you have to write a statement about your skills and experiences.



University of Exeter

<https://www.exeter.ac.uk/>

Where are you located?

Exeter is in on the south coast of Devon, by the sea and in one of the most picturesque counties and locations in the country. It is easily accessible by car on the M5, and by train from London, Birmingham and Manchester.

What do you do?

We do a variety of courses at Exeter including Medicine, Health courses, Engineering, Sciences, Humanities, Social Sciences and Degree Apprenticeships.

Where can I go with the organisation?

Studying at a prestigious university like Exeter will provide opportunities for a strong career in the future, with Exeter being a highly employable university. The friends and experiences along the way will also put you in good stead for life after university.



University of Keele

<https://www.keele.ac.uk/>

Where are you located?

Keele is a campus university with over 12,500 students, nestled in 600 acres of Staffordshire countryside, just an hour from Manchester and Birmingham. It's a big campus, but a small and cosmopolitan community, with space to think and plenty to do.

What do you do?

Keele offers a variety of different courses spanning various subject areas, including within Natural Sciences, Humanities & Social Sciences as well as Medicine & Health. Students may have an opportunity to study abroad or undertake a work placement year and learn a language as part of our programmes.



Lancaster University

www.lancaster.ac.uk

Where are you located?

Lancaster University is a campus-based university in the North West of England. Our nine colleges allow students a home from home, they are a place to live, study and socialise. The community feel and international outlook of Lancaster University is one of the reasons our staff and students love being here.

What do you do?

We are top 10 in The Complete University Guide 2024 and consistently placed in the top 15 in major UK league tables (The Times and The Guardian). We are a research-intensive university and our results in the Research Excellence Framework (REF) 2021 confirm our position in delivering world-quality research.

We have over 280 undergraduate degree programmes across 4 faculties, many of which have study abroad or placement opportunities. We also offer a wide range of combined courses.



University of Liverpool

<https://www.liverpool.ac.uk/>

The original 'red-brick' university and founding member of the prestigious Russell Group, the University of Liverpool is a campus university in the heart of the historic City of Liverpool (rated the 7th best city on Planet Earth by Time Out magazine, 2nd best in the UK!)

We're proud to be rated 'Gold' in the Teaching Excellence Framework (TEF) and were shortlisted for 'University of the Year' in The Times Good University Guide 2024.

We have over 600 undergraduate courses across three Faculties, including Bachelor's and integrated Master's degrees, with a wide range of combined degree options and many courses offering industry placements as part of your degree. There are also extensive options to learn a language alongside or as part of your degree.

Courses are taught using innovative learning methods and the latest technologies, ensuring that students graduate with the knowledge and practical skills they need to succeed. We have an incredible range of global opportunities, from summer and semesters abroad to a full year abroad – including at our partner university in China.

We offer over 50 different sports to play, from beginners to advanced level, as well as a sporting scholarship available for high-level athletes, as well as around 200 student clubs and societies as part of the Liverpool Guild of Students.

The university has roughly 30,000 students studying here, with just over 20,000 on-campus. Our innovative Careers & Employability Service gives our students the tools, advice and peer-to-peer support they need to take control of their professional futures. You'll be connected to employability experts, experienced career coaches, and a host of big-name employers too.



Newcastle University

<https://www.ncl.ac.uk/>

As a founding member of the Russell Group of research-intensive Universities, we've been working to understand our world since 1834.

Ranked as a Global Top 110 University, our research and teaching are world leading. We have three campuses in Newcastle, Singapore and Malaysia. Our 29,000-strong student community is drawn from 145 countries. Our community of over 250,000 alumni are creating outstanding impact around the globe.

We educate for life. We've nurtured generations of students to play their part in building a society that's better, stronger, and fairer.

We've developed a global network of strategic industry partners and employers. Our collaborations are providing ideas and solutions of economic, social, and cultural benefit for our world.

From Newcastle. For the world.



**University of
Nottingham**
UK | CHINA | MALAYSIA

Uni of Nottingham

<https://www.nottingham.ac.uk/>

Where are you located?

Our UK campuses are based in the friendly, historic city of Nottingham in central England. The city is world-famous for the legends of Robin Hood, and is a UNESCO City of Literature. There's plenty to explore including a castle, caves, parks and gardens, two football stadiums, the National Ice Centre and the famous Trent Bridge Cricket Ground.

What do you do?

The University of Nottingham is a pioneering university that provides an exceptional education and an outstanding student experience. We deliver world-leading research that transforms lives and societies, and we are 100 in the world (17 in the UK) out of more than 1,000 universities in the QS World University Rankings 2024.

We pioneer a global education, with campuses in Asia and the UK. We are currently named as Sports University of the Year for 2024 in The Times and The Sunday Times Good University Guide 2024 and The Times Higher Education has shortlisted the University for its coveted 'University of the Year' award on four occasions in the last ten years.

The University of Nottingham is ranked in the world top 70 universities for employability by the QS Graduate Employability Rankings 2022. Choose from a wide variety of undergraduate, masters and research degree courses, ranging from arts and humanities, languages, engineering, sciences and medicine to social sciences such as business, economics, politics and law.



University of Reading

www.reading.ac.uk

University of Reading is a global, research-intensive university with student experience at the heart of what we do. You'll be taught by passionate academics whose teaching is informed by the latest research to offer you an outstanding learning experience.

Our degree courses are designed to give you more choice in what you study and how you study it. You'll join an inclusive, welcoming student environment, that actively encourages a strong student voice. Here, you can make a real impact. More importantly, we'll help equip you to make an even greater impact in the world beyond graduation.

Our fantastic teaching, research and study facilities are nestled within 130 hectares of stunning parkland.

- [Explore our upcoming events & subject tasters](#)
 - [Chat to staff and students](#)
 - [Request a prospectus](#)

Find us on: [Facebook](#), [Twitter](#), [Instagram](#), [YouTube](#), [Spotify](#)



SAE Creative Media Institute

<https://www.sae.edu/gbr/leamington/>

Our brand-new SAE Leamington Spa campus opened in September 2023, bringing the global leader in creative media education to the Midlands.

The campus is co-located with our creative industry partners and offers 2-Year accelerated degree courses in growth creative media industries – Audio Production, Content Creation & Online Marketing, Game Art Animation, and Games Programming.

SAE Leamington Spa joins a global network of creative education centres, including our three existing UK campuses located in London, Liverpool and Glasgow.



The
University
Of
Sheffield.

University of Sheffield

<https://www.sheffield.ac.uk/undergraduate>

What do you do?

The University of Sheffield is a Russell Group University with a global reputation for the excellence, impact, and distinctiveness of our research-led learning and teaching.

What can I do and where can I go within the organisation?

We'll help you explore all your options after graduation, including employment, entrepreneurship and further study. You will also have the chance to connect with big private sector employers, SMEs and third sector organisations, finding inspiration and building a network of contacts.

We offer degrees with a year's work experience built in. We can also help you find shorter placements, vacation work and part-time jobs.

Recent placements include: AstraZeneca, Deloitte, Ernst & Young, ESPN, Fujitsu, IBM, the NHS, Rolls-Royce and Unilever. 96% of Sheffield graduates are in work or further study within 6 months of graduating.



Stratford College

<https://www.stratford.ac.uk/>

Stratford-upon-Avon College is a friendly, accessible, employer-responsive College that cares about the individual successes and outcomes of all our students.

Just a ten-minute walk from the centre of the famous Stratford-upon-Avon, the College offers students the opportunity to study in a safe, inclusive environment.

With full time courses, apprenticeship opportunities and progression routes right up to degree level, Stratford-upon-Avon College offers you a route direct to the career that suits you.

Choose the subject you love and study it full-time in state-of-the-art facilities, including our TV studio and gallery, radio studio, motor vehicle workshop, music recording and rehearsal rooms, 3 theatres and much more!



Stratford Girls Grammar School

<https://www.sggs.org.uk/sixth-form>

SGGS Sixth Form offers you a change of environment for A-level study with all the benefits of familiarity. Our historic Manor is a unique space for you to learn and make life-long friendships with students who choose to stay, and those who choose to join us. Year 12 is a new experience and full of opportunities for you to grasp.

As a Sixth Form, we know about success and want to make sure you leave us with the best portfolio of qualifications. We also know that success is about more than your A-levels; universities and employers are looking for a broad range of skills in addition to outstanding academic qualifications and that is why we have devised a unique and varied curriculum, personalised to the future of your choice. We pride ourselves in our transition programme, which is designed to support you in making a seamless transition from GCSE to A-level study and continues to support your growth and development through our comprehensive Sixth Form Pathway.

At SGGS, we shape futures, and our Sixth Form is where your ambition is finally and fully realised. Come and talk to us about our personalised 'futures-enabling pathways' and see how we can support you to achieve the future you aspire to.



University of Warwick

<https://warwick.ac.uk/>

The University of Warwick is an acclaimed UK campus university, internationally renowned for research and teaching excellence, for innovation and for links with business and industry.

We're consistently present in the rankings of the UK's and the world's great universities, offering you the potential to join an international community, that will challenge and support you in equal measure; a place where your drive for knowledge can make lasting impact on your own future and the world around you.

Our expert teachers work alongside, and in partnership with, students to create new knowledge. Together, we challenge expectations. We are powered by our passion for excellence. That's why we were awarded University of the Year for Teaching Quality (The Times 2022). We're also committed to providing the very best learning resources; academic and social facilities that are modern, accessible, and technologically rich.

What do you do?

We offer a range of undergraduate degree courses across the Arts, Social Sciences, Science and Engineering. Please see our website for [full details on the courses we offer](#) and our typical minimum entry requirements for A-Levels or IB, as well as [application information](#), and please do chat to us to find out more!

If you are interested in visiting Warwick, we're just around 30 minutes away from your school; you can [register your interest in our Open Days](#) or book onto a [Talk and Tour](#) convenient for you.



Warwickshire College Group

<https://wcg.ac.uk/>

As one of the leading further and higher education colleges in the UK, with unique colleges across two counties, we aim to deliver learning experiences which lead to the development of wider skill bases and improved destinations for all of our students.

Our 2018 Ofsted inspection highlights our success and strong focus both on students and on meeting industry needs. We are also the first college group in the UK to be granted Bachelor degree awarding powers alongside Foundation degree awarding powers by the Office for Students - meaning the academic quality and standards of our degrees are equal to any university.

We believe it's not just about the vital qualifications and knowledge you need to get ahead, but the essential transferable skills to help you on your next steps, whatever they may be.

WCG will help you develop an entrepreneurial mindset by instilling enterprising and innovative skills and behaviours, which will help you to become successful in an ever-competitive world.

We offer all of the above in a supportive, friendly, high-quality and technologically-driven environment. Our student success rates and A Level results are at an all-time high, with our students progressing onto a wide range of careers with globally recognised brands, and many students have also set up their own businesses and enterprise projects.

WCG is committed to providing the best learning experience possible and whatever your background, I am sure we can help you to achieve your aspirations"



University of Worcester

<https://www.worcester.ac.uk/>

The University of Worcester is a close-knit and high-achieving community where students are supported to succeed at every level. The University has been ranked in the top 5 in the UK for Quality Education in all years of the Times Higher Education's University Impact Rankings, which assess how universities globally are meeting the UN's Sustainable Development Goals. The University has also been ranked in the top 5 in the UK for Gender Equality in all years of the rankings.

In 2021, Worcester Students' Union was ranked among the top 10 unions at mainstream universities across the UK in the independent survey.

Worcester achievements

- **Top 5 in the UK for Quality Education** - in all years of the Times Higher Education's University Impact Rankings
 - **Sustainability Institution of the Year** - Winner- 2019 Green Gown Awards
- **University of the Year** - Finalist - 2020 Times Higher Education Awards and UK Social Mobility Awards
- **Outstanding Contribution to Equality, Diversity and Inclusion** - Winner - 2020 Times Higher Education Awards
 - **Top 10 for Sustained Employment** - Longitudinal Educational Outcomes survey
 - **Top 20 for Student Experience** - Times/Sunday Times Good University Guide 2022

A place for everyone

The University is a truly inclusive place where every person counts as an individual. From designing imaginative facilities to providing practical support and tailored learning, we strive to help people of all backgrounds and abilities to achieve their own rich potential. We work hard to break down barriers and provide opportunities for all.

Worcester is home to Europe's first integrated university and public library, [The Hive](#), and Britain's first inclusive indoor sports hall purpose-designed to include the wheelchair athlete, [the University of Worcester Arena](#), two facilities that exemplify our commitment to inclusion.

Outstanding graduate employment

Worcester has one of the best records of graduate employment in the Country. 96% of Worcester graduates are in work or further study 15 months after graduating (Graduate Outcomes Survey 2022) and Worcester is the number one English higher education institute (excluding specialist institutions) for sustained employment, with or without further study, three and five years after graduation (LEO 2022)

With close industry links across a range of sectors, Worcester students have opportunities to access work placements, to earn-as-they-learn in jobs relevant to your studies, as well as volunteering, all helping to build your skills, confidence and employability.

Environmental Sustainability

Worcester is a leader in sustainability and climate change research, teaching and engagement. The University received First Class Honours in the 2022 People and Planet University Sustainability League, ranking 14th overall. Worcester was named Sustainability Institution of the Year in the Green Gown Awards 2019. Our campus is a living laboratory for developing, testing and implementing solutions that enhance the health of people and planet.



ASTON MARTIN

Aston Martin

<https://www.astonmartin.com/en-gb/>

What do you do?

Aston Martin is a car manufacturing company. F1 is a separate company. We offer young people careers in various departments; some of those are:

- Manufacturing
 - Painters
 - Procurement
 - Supply Chain
 - Finance
 - IT
- Commercial marketing
 - HR
 - Design
- Engineering

Which academic subjects would be useful to work for this organisation?

Maths, English and a science for Engineering roles.

Minimum requirements for all applications are: Maths, English are Grade 4 and above at GCSE. Two A Levels C and above or relevant subject level for Degree apprenticeships.



Avonvale Veterinary Centres

<https://www.avonvets.co.uk/>

Where are you located?

7 sites (Warwick, Southam, Kenilworth, Wellesbourne, Stratford, Cubbington, Heathcote), 100 employees

What do you do?

Veterinary (small animal)

What can I do and where can I go within the organisation?

Nursing training apprenticeships, Graduate veterinary positions

Which academic subjects would be useful to work for this organisation?

Maths, Science (biology/chemistry)

What advice would you give to someone interested in working in this area?

Arrange some work experience



Civil Service

<https://www.civil-service-careers.gov.uk/>

Find your fit in the Civil Service



Civil Service Careers

Want to work somewhere where you can really make a difference? Perhaps a career at the Civil Service could be for you...



Choose your pathway...

1 Civil Service Fast Stream

A unique opportunity for talented graduates – choose from 15 different schemes, including Communications, Digital and House of Parliament.

2 Civil Service Apprenticeships

Why not earn while you learn? Choose from one of our Civil Service Apprenticeships.

3 Direct Entry role

Or you could apply directly to one of our departments for an entry-level role – getting straight to work on government priorities.

For more information go to:
civil-service-careers.gov.uk/ways-to-join



Discover careers in the Civil Service

The Civil Service is changing. Together we're finding new ways to serve the public, work more efficiently, and make government more transparent. We're making the Civil Service a truly brilliant place to work.



In addition to direct entry using CS Jobs, there are a number of alternative ways to join the Civil Service. These include the Fast Stream Graduate Programme and Apprenticeships as well as graduate programmes and apprenticeships offered by departments.



Did you know?

The Civil Service is divided
into departments.

Whatever your passion –
from the environment to
welfare – there's a
department to match.

**We're always looking for
brilliant people to join the
Civil Service**

Our roles are varied, and all
contribute to delivering vital
services to the public.

Crowne Plaza Stratford-upon-Avon

<https://careers.ihg.com/en/our-brands/crowne-plaza-hotels-resorts/>

OUR HOTEL

Bedrooms	259
Meeting Rooms	14
Ballroom	550 people
Riverside Restaurant	180
Bar	120
Terrace	150
Main Bar, Seymour Bar, Terrace Bar & Mobile Bar 1 + 2	
Health & Wellbeing – Gym, Pool, Jacuzzi, Sauna & Steam	



VALOR HOSPITALITY PARTNERS

gfo

2024 OUR ASPIRATIONS

- **BEST** – forefront of everything we do.
- People quality, development and training. To include a drive around craft training.
- Focus on the customer - DETAIL
- Promises Kept – resolve the issues first time.
- The BIG 14 - £14m turnover (£17m gross)
- Recognise our IHG One Rewards Members.
- Empowerment & Accountability - See It + Solve It!
- Environmental – granular needs more work, larger needs investment.
- Manage our costs and everyone play their part.



gfo

6

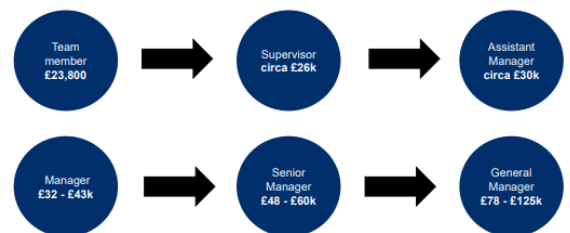


DIFFERENT ROLES IN HOSPITALITY

- FRONT OFFICE & RECEPTION
- HOUSEKEEPING -
- FOOD & BEVERAGE
- CONFERENCE & EVENTS
- KITCHEN
- LEISURE
- MAINTENANCE & ENGINEERING
- FINANCE
- ADMINISTRATION & MANAGEMENT
- HUMAN RESOURCES
- SALES & MARKETING
- RESERVATIONS, REVENUE & COMMERCIAL
- HEALTH & SAFETY / LEGAL COMPLIANCE

gfo

SALARY RANGES



VALOR HOSPITALITY PARTNERS

gfo

8

PROGRAMME OVERVIEW - ENGLAND

FRONT OF HOUSE

- ① LEVEL 2 HOSPITALITY TEAM MEMBER
Specialisms: Food and Beverage, Alcoholic Beverage Service, Barista, Reception, Conference & Events Operations
- ② LEVEL 3 HOSPITALITY SUPERVISOR
- ③ LEVEL 2 CUSTOMER SERVICE PRACTITIONER
- ④ LEVEL 3 CUSTOMER SERVICE SPECIALIST
- ⑤ LEVEL 3 BUSINESS ADMINISTRATOR
- ⑥ LEVEL 3 TEAM LEADER / SUPERVISOR
- ⑦ LEVEL 4 HOSPITALITY MANAGER
- ⑧ LEVEL 4 LEARNING AND SKILLS MENTOR
- ⑨ LEVEL 5 OPERATION / DEPARTMENTAL MANAGER

BACK OF HOUSE

- ① LEVEL 2 PRODUCTION CHEF
- ② LEVEL 2 COMMIS CHIEF
- ③ LEVEL 3 HOSPITALITY SUPERVISOR
- ④ LEVEL 2 CUSTOMER SERVICE PRACTITIONER
- ⑤ LEVEL 3 CUSTOMER SERVICE SPECIALIST
- ⑥ LEVEL 3 BUSINESS ADMINISTRATOR
- ⑦ LEVEL 3 TEAM LEADER / SUPERVISOR
- ⑧ LEVEL 4 HOSPITALITY MANAGER
- ⑨ LEVEL 4 LEARNING AND SKILLS MENTOR
- ⑩ LEVEL 5 OPERATION / DEPARTMENTAL MANAGER

LEADERSHIP

- ① LEVEL 3 TEAM LEADER / SUPERVISOR
- ② LEVEL 4 HOSPITALITY MANAGER
- ③ LEVEL 4 LEARNING AND SKILLS MENTOR
- ④ LEVEL 5 OPERATION / DEPARTMENTAL MANAGER

In partnership with

inspiro



T: 0800 731 8199

E: contact@inspirolearning.co.uk

W: www.inspirolearning.co.uk

© Inspiro 2024



Deloitte

<https://www.deloitte.com/global/en/careers.html>

Deloitte UK is a leading professional services firm committed to making an impact for our clients, our people and for society.

We have over 20,000 people across the UK, providing Audit, Risk Advisory, Tax, Consulting and Financial Advisory services to public and private clients across multiple industries.

We offer a range of programmes from Degree Apprenticeships to University Graduate Schemes.



FELDON DUNSMORE SOLICITORS

Feldon Dunsmore Solicitors

<https://www.feldondunsmore.co.uk/>

Where are you located?

Feldon Dunsmore Solicitors is a niche commercial property law firm based on a working farm in Warwick.

What do you do?

We deal with a wide range of non-contentious commercial property matters across the country including landlord and tenant, secured lending and acquisitions/disposals, with a particular focus on development projects. We pride ourselves in offering our diverse range of clients with practical, tailored, solution-focused legal advice of a quality provided at partner level within larger city firms.

We are a close-knit, approachable, relatively young team (average age currently 29) comprising four partners, two legal directors, a plot sales manager, operations and events manager, a legal executive, solicitor, two trainee solicitors and five paralegals.

We are extremely passionate about training and developing early talent, with the aim of supporting each team member to be the best that they can be. One of our legal directors is dedicated Head of Early Talent, which is unusual for a firm of our size.

What can I do and where can I go within the organisation?

We run an Apprenticeship scheme open to Sixth Form leavers and are currently accepting applications for a September 2024 start.

Work Experience

We also run 3-day work experience placements for Sixth Form students, which is not only a great opportunity to gain an insight into life as a commercial property lawyer, but for the right candidate can also act as a stepping stone to recruitment for our Apprenticeship scheme.

What advice would you give to someone interested in working in this area?

Working in law can be challenging at times but is incredibly rewarding as a result. If you are considering a career in law, we would recommend obtaining varied work experience in as many different practice areas and types of firms as you can. From our own personal experiences, we

have learnt that work experience is invaluable in steering career choices and that it is just as important to find out what you do not enjoy, as what you do enjoy.

When considering applications to any of our schemes, we look for candidates with a strong academic record who are a team player, enthusiastic, proactive, commercially-minded with excellent communication skills and have a desire to go above and beyond.



Jaguar Land Rover

www.jaguarlandrovercareers.com

Where are you located?

Jaguar Land Rover is located in multiple locations across the UK. The main engineering centres are in Gaydon and Whitley. We have manufacturing locations in Solihull and Halewood, Liverpool. We also have Software centres in Manchester and Shannon.

What do you do?

Jaguar Land Rover is an automotive research, development and engineering company.

What can I do and where can I go within the organisation?

Jaguar Land Rover have a number of Degree Apprenticeship places open in a variety of roles;

- Digital and technology solutions
- Applied Professional Engineering
 - Supply Chain Engineering
 - Finance

Which academic subjects would be useful to work for this organisation?

A-level Maths

A-level in another STEM subject

What advice would you give to someone interested in working in this area?

It would be good to get some work experience in the relevant area in order to gain an understanding of the job role. Find out more on our website:

https://www.jaguarlandrovercareers.com/content/Apprentices/?locale=en_GB



Langmans Dental Health Services

<https://www.langmansdental.co.uk/>

What do we do?

General Dental procedures (routine examinations, fillings, extractions, Root Canal Treatments, crowns, bridges, dentures, dental implants. etc)

Oral Health Education and Preventative treatments (scale and polish, fluoride applications, fissure sealants, tooth brushing advice, interdental cleaning advice)

Dental Hygiene (more involved and specialised cleaning of the teeth and gums, specifically the treatment of gum and periodontal disease, including the Oral Health Education above)

Dental Technology (making artificial teeth, gumshields, mouthguards etc)

What can I do and where can I go within the profession of Dentistry?

Multi-disciplinary teams within dentistry include:

Business Managers, administrative staff, Dentists, Dental Hygienists and Therapists, Dental Nurses, Trainee Dental Nurses, Dental Laboratory Technicians.

Following qualification, Dentists can undertake a year of supervised clinical training called a Foundation Year and can then go on to study postgraduate specialised courses in different areas of treatment

Administrative staff can progress into management roles.

Dental Nurses can undertake post-registration courses in areas such as Dental Radiography, Oral Health Education, Dental Implant Nursing, Dental Sedation Nursing, Orthodontic Nursing and extended duties such as removal of sutures, fluoride application, clinical photography.

Dental Hygienists can extend duties to include dental therapy.

All clinical staff can progress into education and training.

Dental Laboratory Technicians can expand their roles into training as Clinical Dental Technicians to enable them to see patients independently within their 'Scope of Practice'

Which academic subjects would be useful to work in the dental profession?

Biology, chemistry, Maths, Physics

What advice would you give to someone interested in working in this area?

Gain as much work experience as possible. Try different practices, as many dental professionals work differently, and aim to see a mix of private, NHS and specialised treatments if possible.

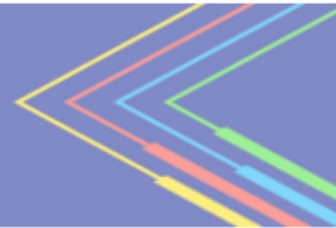
Look into all the different dental professions such as Dentist, Dental Nurse, Dental Hygienist / Therapist, Dental Technician, Clinical Dental Technician, Practice Management



National Grid

<https://www.nationalgrid.com/careers>

National Grid



Careers Fair Details |

About National Grid

National Grid Electricity Transmission owns and maintains the high voltage electricity network in England and Wales. This includes 4500 miles of overhead lines, 900 miles of underground cables and more than 300 substations. This network allows you access to electricity whenever you need it.

National Grid Electricity Distribution also owns and maintains the electricity distribution network across the Midlands and South-West England, formally known as Western Power Distribution. This connects 8 million homes with 2 million poles and towers, 190,000 substations and over 141,000 miles of wires and cables.

National Grid is connecting more sources of renewable energy to the electricity transmission and distribution systems to achieve Net Zero by 2050. This means we have a huge amount of work:

- To build over **5X** more transmission lines by 2030 than we built in the last 30 years
- To build **4X** more marine cables than we have in our current offshore network by 2030
- To connect **3X** the amount of electricity generation we currently have to our networks by 2025

National Grid have offices located in Warwick, London, Bury St Edmunds, Hewish, and Leeds. National Grid Electricity Distribution have several offices across the Midlands and South-West UK. National Grid Electricity Transmission also have many hands-on field-based roles located at substations across the country.

Academic subjects and experience

There are various exciting roles within National Grid, including a wide variety of opportunities within engineering, finance, cyber security, project management, data analyst, IT, procurement and HR. Attending the careers fair today are colleagues from across the Electricity Transmission business, specifically from Responsible Business Change, Delivery Optimisation Planning and Power Systems Engineering.

Useful subjects at GCSE/A-level: Mathematics, Physics, Computer Science/IT, Business/Economics

Career Opportunities

There are various apprenticeships and graduate programs offered by National Grid, with starting salaries between £21,164 - £33,154. For all apprenticeships you will gain a qualification at the end of the scheme – for example a Level 3 qualification (Advanced Apprenticeships) or an HNC/Foundation Degree (Higher Apprenticeships), which are all fully funded by the company in addition to a paid salary and benefits.

To apply for Advanced Apprenticeship roles, you must be 16+ and have a minimum of 5 GCSEs (with a pass grade in Maths and English). To apply for Higher Apprenticeship roles, you must be 18+ and have a minimum of 5 GCSEs (with a pass grade in Maths and English) as well as 2 A-Levels. Some roles will specify the requirement for this to include Maths. Head to the National Grid Careers UK webpage to find more information on the various apprenticeship roles that are now live (deadline end of March).

Joining us, you'll be supported as you develop a wide range of business and technical skills, through structured training and on-the-job experience. We also continue to support and develop our staff after completion of formal schemes, with plenty of opportunities for growth and moving round the business.

Why National Grid?

Our values are do the right thing, make it happen and find a better way. As the electricity network grows, we need more talented people to join us to deliver a clean, fair, and affordable future. Diversity, equity, and inclusion are at the heart of who we are and what we do. We encourage applications from all backgrounds, communities, and experience.



NFU Mutual

NFU Mutual

www.nfumutual.co.uk/careers/

What do we do?

NFU Mutual is a Financial Company, with offer roles in HR, Customer Services, IT, Marketing and Finance.

What can I do and where can I go within the organisation?

Here at NFU Mutual, we've come a long way over the last 100 years and grown into a leading UK insurer. There's no great secret behind our success – it's thanks to our strong values, talented people and wholehearted commitment to excellent service. We are passionate about building on our strengths and continuing to nurture strong, trusted relationships with millions of customers. With ambitious plans ahead, we want to find and develop great individuals who will help to lead us forward and shape our future, which is exactly where our Graduate and Apprenticeship programmes come in. Joining one of the schemes, you'll be empowered to own and grow your career, and given the support and opportunities you need to thrive.

Which academic subjects would be useful to work for this organisation?

5 GCSEs including 4-9 (A*-C) in Maths and English or equivalent

What advice would you give to someone interested in working in this area?

A keen interest in the business area you are applying for demonstrated by any extracurricular activities that you have been involved in or any hobbies outside school.



Rolls-Royce

<https://careers.rolls-royce.com/united-kingdom>

School Leaver and Apprenticeships

Join us, and you'll contribute to our ground-breaking work. You can expect all the training and qualifications you need to get your ideas noticed, and the support to develop your skills and knowledge. You'll be welcomed into a friendly, inclusive culture where your unique perspective will be valued. A place where you can be your best and feel like you belong.

As well as a competitive salary, our apprenticeships offer the chance to study for fully sponsored qualifications. So, there's no need to rack up any student debt.

Whichever programme you choose, you'll find yourself working in a collaborative and digitally-enabled environment, with the most advanced technology, alongside industry leaders and experts. You'll combine on-the-job training with digital learning and practical skills development as you study towards nationally-recognised qualifications.

And in terms of your salary, while it's not the only important thing, we know you're keen to know how this would progress during your time on your apprenticeship.



South Warwickshire University NHS Foundation Trust

<https://www.swft.nhs.uk/join-us/careers>

Where are you located?

The NHS is a great place to start out your career in clinical but also non clinical roles. We are located mainly at Warwick Hospital, Lakin Road.

What do you do?

If you are interested in any type of career within the NHS, a good place to start would be having Work Experience. You would be able to achieve this with ourselves, in the department that you are most going to want a career in. This will allow you to have some experience and get to understand the roles that these people have to take.

Apprenticeships are another way other than University to achieve your degree. We have many different Apprenticeships within the NHS, clinical but also non clinical: for all of these, you will need to have achieved a GCSE Grade 4 or above.

Please ask us any questions that you have, and we will try our hardest to give you the best answers.



Taylor Wimpey

<https://www.taylorwimpey.co.uk/jobs>

Taylor Wimpey is a national housebuilder with a local presence. We have regional offices across England, Wales and Scotland and deliver over 10,000 homes a year.

Jade and I both work for Taylor Wimpey West Midlands which is one of our regional offices based in Solihull with development sites across the west midlands.

Within the Midlands Taylor Wimpey also have regional offices in Warwick, Wolverhampton and Leicester.

At Taylor Wimpey, we bring together a talented team with diverse backgrounds and skills performing a wide range of both office and site based roles.

To find out more about career paths available within Taylor Wimpey please have a look at our website - <https://www.taylorwimpey.co.uk/jobs/early-careers/>

Jade Taylor and Neil Blight, biography:

Jade has been in the construction industry for 10 years. She started as an Assistant Site Manager with Taylor Wimpey 6 years ago. Throughout her career over the past 6 years she has now progressed to Senior Site Manager.

Within that role she oversees the site management and is responsible for running our development site at Regency Gate in Worcester, which comprises 483 homes. The site is currently a quarter of the way through build and she is delivering it with the help of a great team.

Jade has said for her it's about teamwork to deliver a quality product for our customers and help young talent grow.

Neil has been in the construction industry for 17 years. He has a masters degree in civil and environmental engineering and started his career as a design engineer for an engineering consultancy working on a number of projects (highways, rail, hospitals, prisons, schools, apartments and more). Neil was there for a 7 year period and became a chartered Civil Engineer.

Neil then moved into housebuilding where he joined Taylor Wimpey West Midlands as a project engineer 10 years ago. In that time Neil have worked for two other developers before re-joining Taylor Wimpey West Midlands as Technical Director 3 years ago.

Neil is responsible for the technical function of the business and my team deals with all the planning, architecture and engineering on our development sites from initial purchase of the land to completion of the development at the end of the construction period. What Neil loves about his job is the variety and the wide range of people he gets to work with both internally and externally.



Warwickshire County Council

www.warwickshire.gov.uk

Where are you located?

We employ approximately 10,500 people, our central site location is Shire Hall in Warwick however we have well over one hundred further sites across the county including office buildings, libraries, schools, and fire stations.

What do you do?

We are the local authority for the county of Warwickshire and our core objective is to make Warwickshire the best place it can be. We have a range of public services, including social care, education, transport and highways, fire and rescue, libraries, health, waste management, and environmental support. Supporting these frontline services, we also have background functions such as finance, IT, HR, legal and property.

What can I do and where can I go in the organisation?

We offer a vast array of apprenticeships in virtually all of our services, across a range of levels - entry level, higher, or degree. All of our apprenticeships are the first step on a career path into further employment within the council, providing you with the skills and experience needed to launch your career in the profession you wish to get into. Just a few examples of career opportunities we offer are Accountant, Civil Engineer, Data Analyst, ICT Technician, Library Assistant, Social Care Worker, and Teaching Assistant.

Which academic subjects would be useful to work for this organisation?

Few of our apprenticeships require you to have qualifications in specific subjects, however for roles such as engineering or accounting, strong grades and aptitude for maths will be helpful. Higher/degree apprenticeships will require you have A Levels or equivalent at grade C or above but rarely in a specific subject, as we wish to make our criteria for apprenticeships as inclusive as possible.

What advice would you give to someone interested in working in this area?

Keep an eye on our jobs website for the apprenticeships we offer, especially in the spring or summer months as that is when we generally advertise most of our vacancies, to start the following September. Make sure you have an up to date CV and that you follow all instructions carefully when applying for any of our roles. Questions or queries about what we offer are always welcome and so if you want to find out more about what we do, please contact us via apprentice@warwickshire.gov.uk.



Warwickshire Police

<https://www.warwickshire.police.uk/police-forces/warwickshire-police/areas/warwickshire-police/ca/careers/volunteers/police-cadets/>



Police cadets

Warwickshire Police cadets is for young people who wish to engage in a programme that offers them an opportunity to gain a practical understanding of policing, develop their spirit of adventure and good citizenship, while supporting their local policing priorities through volunteering, working with partner agencies and positive participation in their communities.

About our cadets

To become a Warwickshire Police cadet you must live or go to school in Warwickshire and be aged 13 to 16 years old on September 1 2024.

We have three units in Warwickshire, one in Nuneaton that covers North Warwickshire, one in Leek Wootton Warwick which covers South Warwickshire, and one in Rugby which cover the East of Warwickshire.

We have a Junior scheme for Cadets aged 13 to 16 years still at secondary school and a senior scheme for cadets aged 16 to 18 years.

To apply to become Senior cadets you must currently be a year 11 student when applying and would be a cadet for 2 years, whilst in further education.

Seniors cadets aged between 16 to 18 years old meet every Thursday evening in North and South Warwickshire, and Tuesdays in East Warwickshire between 6.15pm and 8.30pm.

Junior cadets aged between 13 to 16 years old meet every Tuesday evening in North Warwickshire, Wednesday in South Warwickshire and Thursday in East Warwickshire 6.15pm – 8.30pm.

Please contact us at cadets@warwickshire.police.uk or follow us on Twitter if you need any assistance or have any further questions.



ASK Apprenticeships

<https://www.gov.uk/apply-apprenticeship>

The Apprenticeship Support and Knowledge for Schools and Colleges programme (ASK) is funded by the Department for Education. The programme is designed to give schools, colleges and other educational establishments across England free support to develop and transform how students think about apprenticeships and T Levels.

The ASK ambassadors are a small team, who are to help educators, employers and students navigate the fast-changing world of apprenticeships and vocational education. Our positively charged, inspired team has a wealth of experience in working with schools and colleges.



GVI Gap Year

www.gvi.co.uk

Where are you located?

01727 250250 1 Emperor Way, Exeter, EX1 3QS

What do you do?

GVI offers a range of award-winning programs that boost career development in the conservation and community development sectors globally.

Our programs are focused on empowering participants to grow new skills, gain valuable knowledge, get practical experience and benefit from expert guidance, coaching and mentoring to ensure they are prepared to launch into a successful career.

What can I do and where can I go within the organisation?

GVI has programs on five continents, varying from 1 to 24 weeks, including:

- Internships (in-person or online)
- Professional apprenticeships (with a guaranteed 3-month job placement)
- Research fellowships (with academic supervision to finish your research)
 - Online courses

After completion, participants leave with certificates endorsed by the University of Richmond, a LinkedIn reference and access to a job portal and preferential GVI recruitment.

Which academic subjects would be useful to work for this organisation?

Geography, international development, zoology, conservation, education, psychology, ecology, sustainability and more.

What advice would you give to someone interested in working in this area?

Pursue your green passion with flexibility and continuous learning. Embrace opportunities, even if not your exact dream yet, as they can be stepping stones to your ideal green career. Focus on gaining experience and building your network through internships and other avenues.



Army Careers

<http://www.army.mod.uk>

Where are you located?

We are a Worldwide Organisation

What do you do?

The Army offer a variety of different career streams including: Combat, Engineering, Logistics, Medical, Intelligence, IT, Communications, HR & Finance, Musical and many more.

What can I do and where can I go within the organisation?

Your career in the Army can take you to anywhere in the world, whether its overseas training, disaster relief, peace keeping operations, anti-poaching. The British Army do a whole lot more than just resolving conflict.

Which academic subjects would be useful to work for this organisation?

Maths, English & Science at GCSE is required but there is no preference in A-Level subjects or Degree unless looking to join as a Professionally Qualified Officer, such as a Doctor, Dentist, Vet (plus others).

What advice would you give to someone interested in working in this area?

The British Army is for people who want an exciting and active career. Something that offers lots of responsibility, teamwork, adventurous training, sport, leadership and much more. The British Army is not your regular 9-5 office job, it's a lifestyle choice.



Royal Air Force

<https://www.raf.mod.uk/>

What do we do?

There are many different roles in the Royal Air Force. Each comes with its own challenges and rewards. RAF Regulars are our full-time personnel that form the foundation of the RAF, playing a critical role in defence and peacekeeping operations. Regulars serve all over the UK and wherever in the world they're called upon.

They live an exciting life while developing vital skills that will serve them throughout their careers. RAF Reserves train and work alongside Regulars in their spare-time.

Reserves train to the same high standards as Regular personnel and perform a crucial role within the organisation. Working around their day job, using their weekends, they gain transferable skills and a rewarding lifestyle that offers the best of both worlds.

What can I do and where can I go within the organisation?

The RAF has over 50 available roles and multiple career development opportunities.

We employ everyone from Chefs and Photographers, to Cyberspace Communications Specialists and Pilots.

Regardless of role the RAF believes in life-long learning so our personnel are trained to the highest standards. As well as having the opportunity to gain professional qualifications that will equip them for a great career after the RAF, they can look forward to having their talents recognised, developed and rewarded.

Which academic subjects would be useful to work for this organisation?

Whatever your academic background, there are a range of great opportunities in the

RAF. Some require minimal qualifications, others require specialist skills and/or a degree. Check the educational requirements for your role, if unsure consult the RAF equivalent qualifications in case they are applicable.

Sponsorship: We offer a number of sponsorships and scholarships to support exceptional individuals who want to join the RAF. These range from covering the cost of sixth form college to a bursary or cadetship while at university.

What advice would you give to someone interested in working in this area?

Visit www.raf.mod.uk/RECRUITMENT



Royal Navy

www.royalnavy.mod.uk

A job in the Royal Navy means adventure, camaraderie, and lifelong prospects. Every day is different, whether you're policing oceans, delivering aid during disasters, or engaged in combat. Join us and be a key part of global operations.